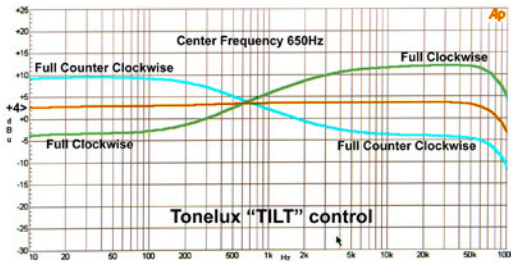


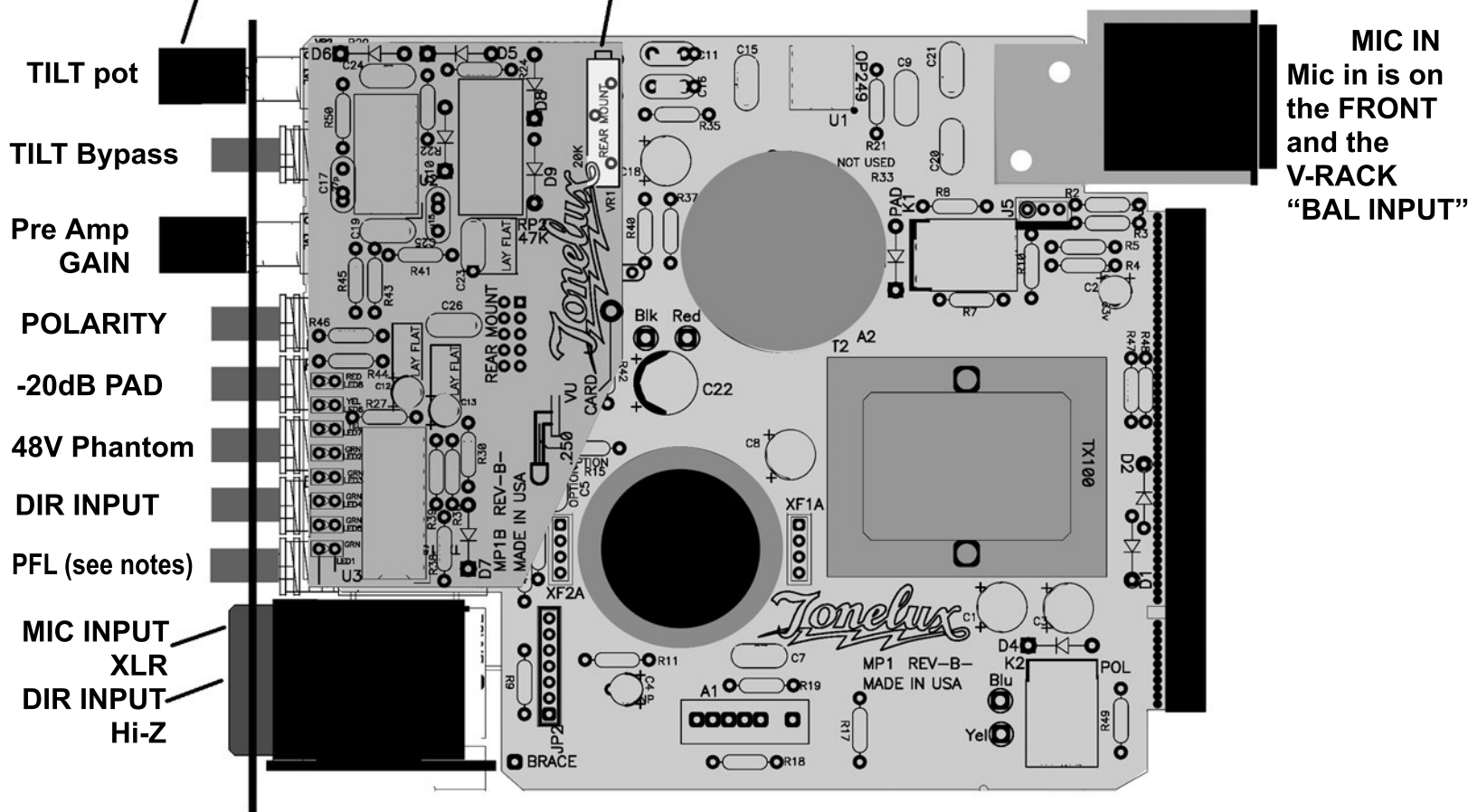
# Tonelux

## MP1 REFERENCE SHEET



(see web page for more details)

Adjust VU CAL for a level of +4dBu at the output  
Trim until the "0" LED just comes on half bright



### NOTES:

- 1 MIC in is on the REAR XLR, the FRONT XLR and the V-RACK "BALANCED INPUT" d-sub connector
- 2 The INSERT RETURN D-sub on the rear of the V-RACK is a resistor isolated split of the MIC input  
Use this for a feed into another MIC PRE or a Spitter. It is isolated with 2X 250 ohms.
- 3 The PFL switch on the front panel works if you have an SM1, CR2, or FX2 set up as a PFL module
- 4 The DIR INPUT is in the center of the XLR combo jack and is UNBALANCED, with a 250K load.
- 5 The TILT EQ IN switch bypasses the TILT circuit when OUT.
- 6 The TILT center Frequency is about 800 Hz, which minimizes boosting or cutting from 400 to 1200 Hz
- 7 The TILT control Boosts the HIGHS as it CUTS the LOWS and visa-versa
- 8 The DIRECT OUTPUT on the rear of the V-RACK is a feed after the Transformer which can feed a VU Meter, an external monitor mixer or a Peak Meter. This amp also feeds the LED VU Meter in the front panel so it reflects the true output level, and will show loading and shorts as well.